



The right connection
The right environment

Multi station bar manifold for mounting
four port valves having interface conforming
to ISO 4401-03-04

BM-CETOP-03-XX-2.0

Ref. No. H14741
Release: Jan 2021

ENGINEERING - 1 of 2

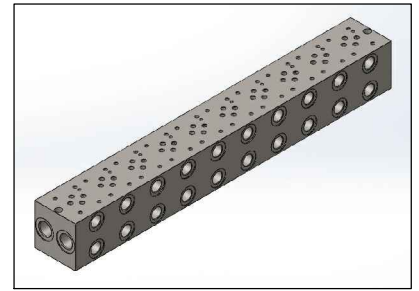
Description

These bar manifolds are designed to connect valves having interface conforming to ISO 4401-03-04

Valves can be assembled parallel to each other with minimum space.

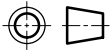
These manifold connects all 'P' ports of the interface to a common passage which is sized to provide minimum pressure drop.

The maximum number of interfaces available on manifold bar are 10.

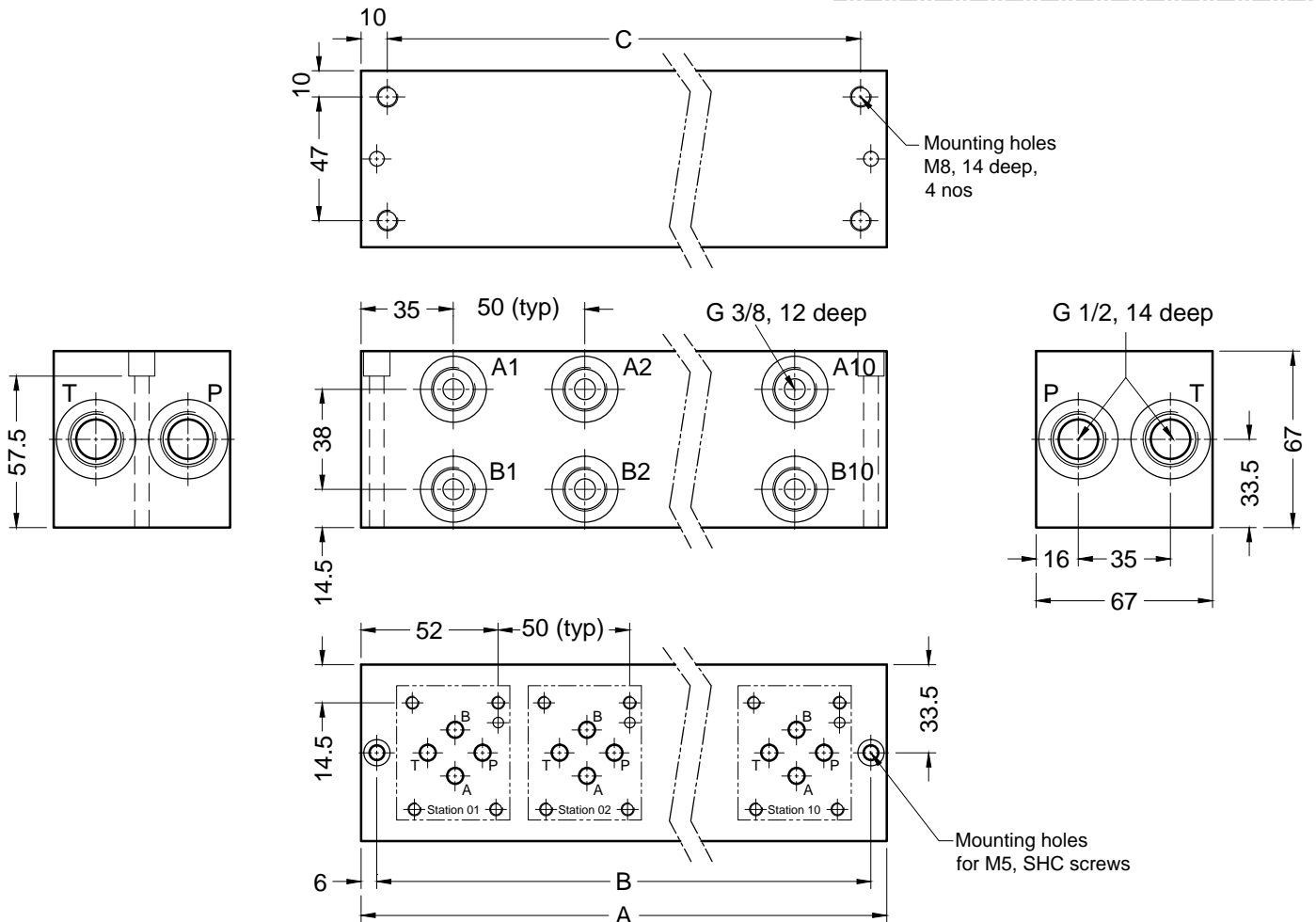
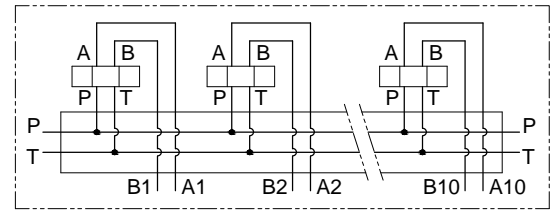


Unit Dimensions

Dimensions in mm.



Hydraulic Symbol



Material : Carbon Steel (Max. Working pressure - 315 bar)

No. of Stations	01	02	03	04	05	06	07	08	09	10
Part number	BM-CETOP-03-01	BM-CETOP-03-02	BM-CETOP-03-03	BM-CETOP-03-04	BM-CETOP-03-05	BM-CETOP-03-06	BM-CETOP-03-07	BM-CETOP-03-08	BM-CETOP-03-09	BM-CETOP-03-10
A	70	120	170	220	270	320	370	420	470	520
B	58	108	158	208	258	308	358	408	458	508
C	50	100	150	200	250	300	350	400	450	500



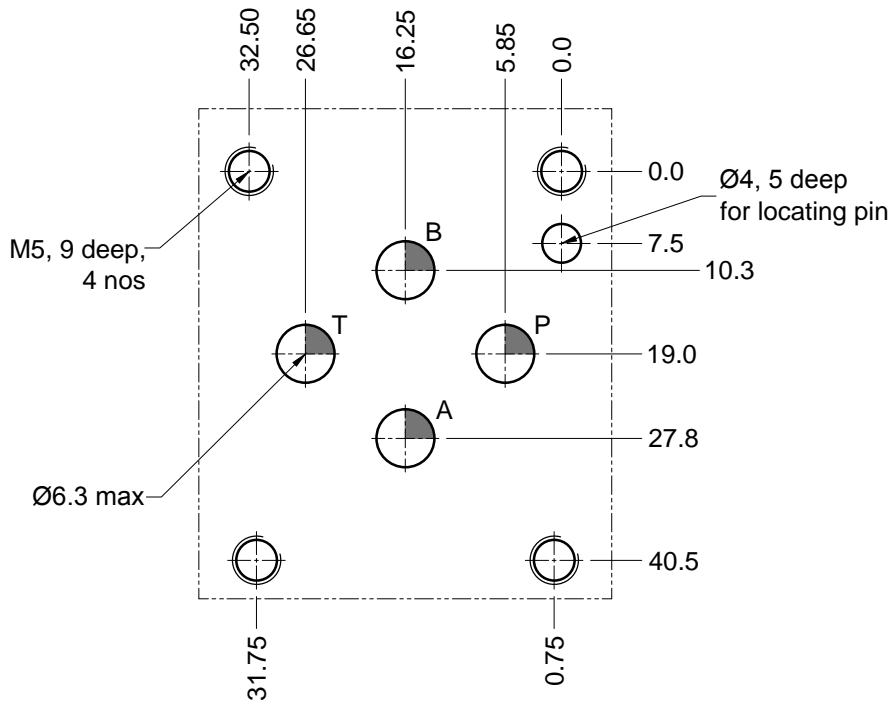
The right connection
The right environment

Multi station bar manifold for mounting
four port valves having interface conforming to
ISO 4401-03-04
BM-CETOP-03-XX-2.0

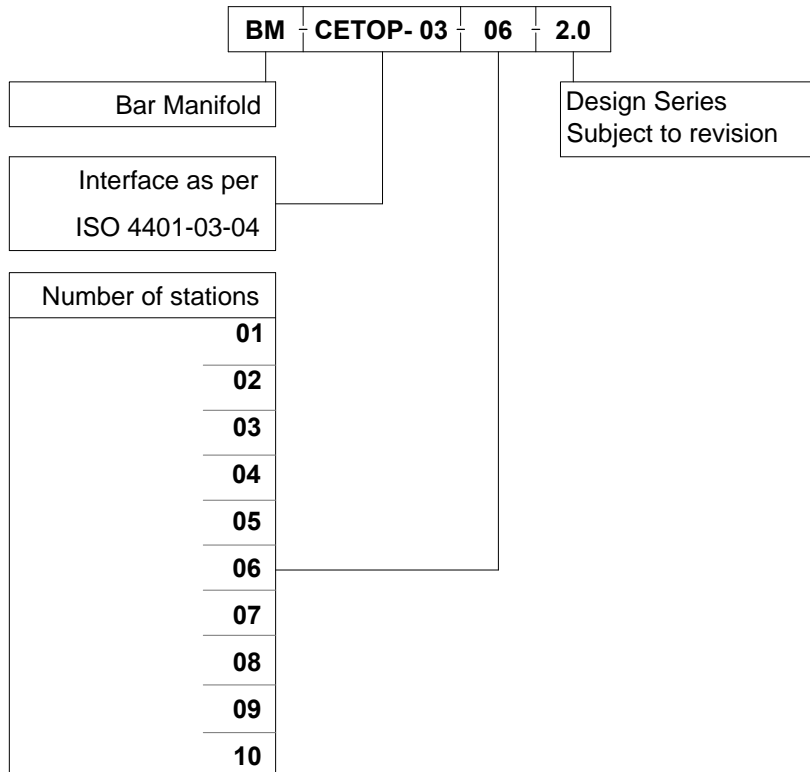
Ref. No. H14741
Release: Jan 2021

ENGINEERING - 2 of 2

Interface details



Ordering Code



All rights reserved.
Subject to change without notice.