



The right connection  
The right environment

# Quick Disconnect Coupling QDC

Ref. No. H03297  
Release: Aug 2020

ENGINEERING - 1 of 2

## Description

Quick disconnect couplings are designed for applications, where fast connection and disconnection of hydraulic lines is a need of the system.

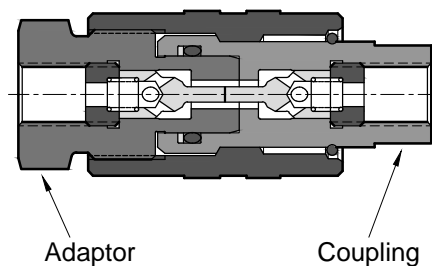
These couplings when connected offers unrestricted flow passage.

They are designed for reliable and safe operations by avoiding premature flow before the coupling is fully closed.



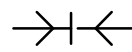
## Section

(Self sealing Coupling, Self sealing adaptor illustrated)

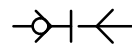


Hydraulic Symbol

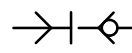
Coupling Type



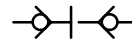
Through type Adaptor AT  
Through type Coupling CT



Self sealing Adaptor AS  
Through type Coupling CT



Through type Adaptor AT  
Self sealing Coupling CS



Self sealing Adaptor AS  
Self sealing Coupling CS

## Unit Dimensions

End connections (Female threading)  
BSP - **G**  
Metric - **M**

Dimensions in mm.

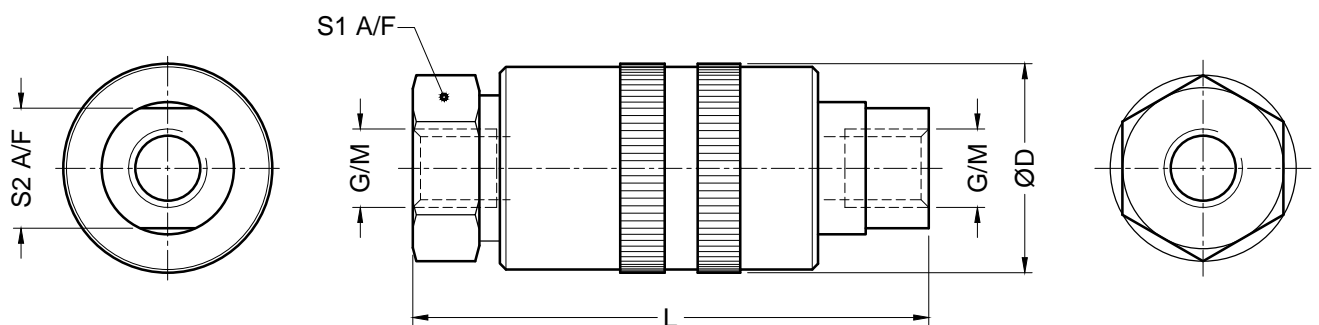
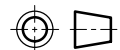


Table No. 1

Pressure (bar)	G	M	S1	S2	ØD	L	Mass (Kg)
800	G 1/4	M14x1.5	27	19	35	86	0.45
800	G 3/8	M18x1.5	32	22	37	88	0.53
600	G 1/2	M22x1.5	41	30	46	116	1.05
500	G 3/4	M26x1.5	50	36	56	130	1.80
400	G 1	M33x2.0	55	41	62	150	2.35



The right connection  
The right environment

# Quick Disconnect Coupling QDC

Ref. No. H03297  
Release: Aug 2020

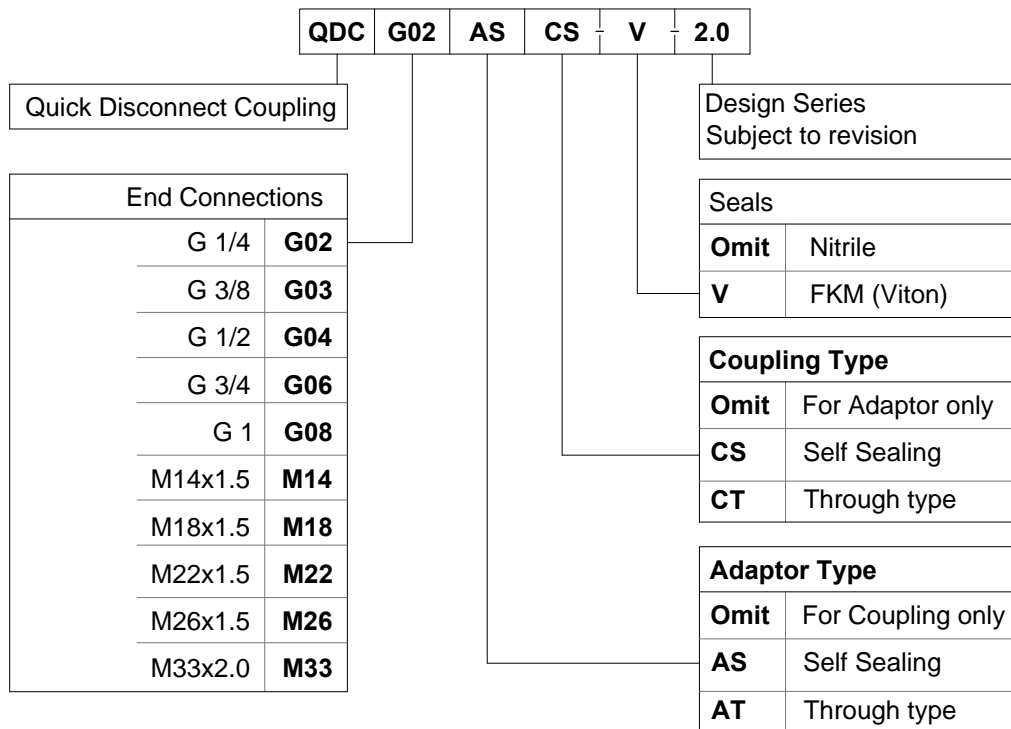
ENGINEERING - 2 of 2

## Technical Specifications

- Construction ----- Poppet type
- Operating pressure ----- Refer Table No. 1
- Hydraulic medium ----- Mineral oil.
- Viscosity range ----- 10 cSt to 380 cSt
- Fluid temperature range ----- -20 °C to +80 °C.
- Fluid cleanliness requirement ----- As per ISO 4406 20/18/15

**Caution : Pressure on the hydraulic lines must be released before they are connected / disconnected.**

## Ordering Code



Note : Add prefix 316 to the above part code for SS 316 Quick disconnect couplings.  
e.g. **316-QDCG02ASCS-2.0**

All rights reserved.  
Subject to change without notice.  
Due to continuous improvement in the design of the product, the actual product supplied may look different than shown above.